

The Anvil logo consists of the word "anvil" in a bold, lowercase, sans-serif font. A red horizontal line is positioned directly beneath the letters "an", and a registered trademark symbol (®) is located to the right of the word.

anvil®

A young man with short brown hair and a bright smile is the central focus. He is wearing a dark navy blue t-shirt with a white ribbed crew neck. His right arm is raised, with his hand behind his head. The background is a plain, light-colored wall.

ecollection

Earth-friendly sportswear from a company you can believe in



Anvil Organic® Ladies Cotton Tee

Style: 428 **Size:** S-3XL

Colors: white, black, charcoal, CharityPink™ (Anvil donates 1%), chocolate, city green, green apple, mandarin orange, natural, navy, red, river blue, spring yellow, yellow haze.

Product details: 5.0 oz. pre-shrunk; 100% certified organic cotton; relaxed silhouette is fashion cut for ladies; shoulder-to-shoulder tape and seamed collarette; double-needle sleeve and bottom hem; white and natural sewn with cotton thread.



Anvil Organic® Cotton Tee

Style: 420 **Size:** XS-4XL

Colors: white, black, charcoal, CharityPink™ (Anvil donates 1%), chocolate, city green, green apple, mandarin orange, natural, navy, red, river blue, spring yellow, yellow haze.

Product details: 5.0 oz. pre-shrunk; 100% certified organic cotton; shoulder-to-shoulder tape and seamed collarette; double-needle sleeve and bottom hem; white and natural sewn with cotton thread.

See the results of our GHG product life cycle assessment for the AnvilOrganic® tee on anvilscr.com

AnvilOrganic® Ladies TEARAWAY™ Tee

Style: 498 **Size:** S-2XL

Colors: white, black, CharityPink™ (Anvil donates 1%), chocolate, independence red, natural, navy, silver.

Product details: 4.5 oz. pre-shrunk; 100% certified organic combed ring spun cotton; shoulder-to-shoulder tape and 3/4" seamed collarette; double-needle sleeve and bottom hem; single-needle neck, fitted silhouette; side seam and display tape; white and natural sewn with cotton thread; features TEARAWAY™ label.



AnvilOrganic® TEARAWAY™ Tee

Style: 490 **Size:** XS-2XL

Colors: white, black, heather grey, independence red, light blue, natural, navy, city green, chocolate, smoke, silver.

Product details: 4.5 oz. pre-shrunk; 100% certified organic combed ring spun cotton (heather grey is 90% certified organic combed ring spun cotton/10% polyester); fashion fit; shoulder-to-shoulder tape and 3/4" seamed collarette; double-needle sleeve and bottom hem; white and natural sewn with cotton thread; features TEARAWAY™ label.

AnvilOrganic® Ring Spun Piqué Sport Shirt

Style: 4402 **Size:** S-3XL

Colors: white, black, chocolate, natural, navy, red.

Product details: 6.5 oz. pre-shrunk; 100% certified organic ring spun cotton piqué; soft fashion knit contoured collar and welt sleeve bands; three high gloss wood tone buttons on a clean finished Allen Solley placket with 1/4" reinforced box; double-needle bottom hem; single-needle neck, shoulder, armhole and sleeve; side seamed with 2 1/2" side vents.



AnvilOrganic® Long Sleeve Tee

Style: 429 **Size:** S-3XL

Colors: white, black, chocolate, navy, natural, red.

Product details: 5.0 oz. pre-shrunk; 100% certified organic cotton; shoulder-to-shoulder tape and 3/4" seamed collarette; double-needle bottom hem; white and natural sewn with cotton thread.

AnvilOrganic® Youth Tee

Style: 420B **Size:** XS-XL

Colors: white, black, charcoal, CharityPink™ (Anvil donates 1%), chocolate, city green, green apple, mandarin orange, natural, navy, red, river blue, spring yellow, yellow haze.

Product details: 5.0 oz. pre-shrunk; 100% certified organic cotton; shoulder-to-shoulder tape and seamed collarette; double-needle sleeve and bottom hem; white and natural sewn with cotton thread.



AnvilOrganic® Youth TEARAWAY™ Tee

Style: 490B **Size:** XS-XL

Colors: white, black, chocolate, city green, heather grey, independence red, light blue, natural, navy, smoke.

Product details: 4.5 oz. pre-shrunk; 100% certified organic combed ring spun cotton (heather grey is 90% certified organic combed ring spun cotton/10% polyester); fashion fit; shoulder-to-shoulder tape and 3/4" seamed collarette; double-needle sleeve and bottom hem; white and natural sewn with cotton thread; features TEARAWAY™ label.



All Anvil youth tees manufactured on or after August 14, 2009 will carry a tracking label. We are about to launch TrackMyT.com as a companion website to enable consumers to track where their Anvil youth t-shirt was made and its environmental impact.



AnvilSustainable™ Long Sleeve Crewneck Fleece
Style: 4000 **Size:** S-3XL
Colors: white, black, charcoal, chocolate, city green, heather grey, natural, navy, red.

Product details: 8.0 oz.; 55% certified organic cotton/45% post-consumer recycled polyester; double-needle neck, armhole, shoulder, sleeve and bottom band; seamed collarette with woven twill tape at back of neck; ribbed cuffs and bottom band; side seamed.

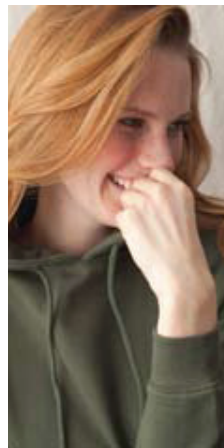


AnvilSustainable™ Long Sleeve Full-Zip Hooded Fleece
Style: 4200 **Size:** S-3XL
Colors: white, black, charcoal, chocolate, city green, heather grey, natural, navy, red.

Product details: 8.0 oz.; 55% certified organic cotton/45% post-consumer recycled polyester; double-needle neck, armhole, shoulder, sleeve, bottom band and kangaroo pocket with reinforced bar tacks; double-layer hood with drawstring; ribbed cuffs and side seamed; full length hidden zipper with metal pull.

AnvilSustainable™ Transitional Cotton/ Recycled Polyester Blend Tee
Style: 450 **Size:** S-3XL
Colors: eco white, black, chocolate, eco natural, heather black, heather blue, heather brown, heather charcoal, independence red, navy.

Product details: 4.8 oz. pre-shrunk; 50% combed ring spun organic cotton in conversion/ 50% post-consumer P.E.T. recycled polyester; shoulder-to-shoulder tape and seamed collarette; double-needle sleeve and bottom hem; features a racer TEARAWAY™ label.



AnvilSustainable™ Long Sleeve Hooded Fleece
Style: 4100 **Size:** S-3XL
Colors: white, black, charcoal, chocolate, city green, heather grey, natural, navy, red.

Product details: 8.0 oz.; 55% certified organic cotton/45% post-consumer recycled polyester; double-needle neck, armhole, shoulder, sleeve, bottom band and kangaroo pocket with reinforced bar tacks; double-layer hood with drawstring; ribbed cuffs and side seamed.

bags



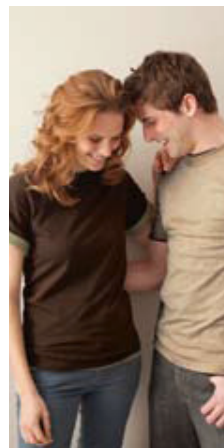
AnvilRecycled™ 100% Recycled Cotton Canvas Tote
Style: 505 **Size:** 13" x 15 1/2" x 7 1/2"
Colors: recycled green, recycled natural.

Product Details: 10.0 oz.; 100% pre-consumer recycled cotton canvas; self fabric reinforced straps.



AnvilOrganic® 100% Organic Cotton Canvas Boater Tote
Style: 431 **Size:** 21" x 16 1/4" x 7"
Colors: Natural/Black, Natural/Brown, Natural/Green (shown left), Natural/Navy.

Product Details: 10.0 oz.; 100% certified organic cotton canvas; contrast color strap and bottom; Velcro® closure with hideaway brass key clip; front self fabric pocket.



AnvilRecycled™ Cotton Blend Tee
Style: 520 **Size:** XS-4XL
Colors: recycled white, recycled black, recycled blue, recycled brown, recycled charcoal, recycled green, recycled heather, recycled navy, recycled red, recycled sand.

Product details: 5.5 oz. pre-shrunk; 69% pre-consumer recycled cotton / 29% acrylic / 2% other fibers (recycled white and recycled green are 70% pre-consumer recycled cotton/30% recycled polyester); shoulder-to-shoulder tape and 1" seamed collarette; double-needle neck, sleeve and bottom hem.

See the results of our GHG product life cycle assessment for the AnvilRecycled™ tee on anvilscr.com





WHAT'S IT MADE OF?

AnvilOrganic®

Anvil is the largest domestic purchaser of US-grown certified organic cotton and was ranked by the Organic Exchange as being the sixth-largest purchaser of organic cotton worldwide in 2008. Organic cotton is cotton that is grown without chemical fertilizers or pesticides from seeds which are not genetically modified. Anvil uses organic cotton that is certified through third party certifying bodies to the United States Department of Agriculture (USDA) National Organic Program (NOP) standard.

AnvilRecycled™

Pre-consumer textile fibers and clippings are collected, sorted by color and blended into yarn. The fibers retain the color of the original textile, so no dyes are needed, saving water & energy.



AnvilSustainable™

Blend of polyester from RPET (recycled plastic bottles) and cotton in conversion to organic farming methods. It takes about 3 plastic bottles to produce enough polyester to make the AnvilSustainable™ Tee.



ANVIL'S COMMITMENT

CORPORATE RESPONSIBILITY

Anvil's Corporate Responsibility strategy and efforts focus on three core areas—environmental, social and product responsibility. Each area is supported by various initiatives with short- and long-term goals. Some initiatives are internal, involving our own efforts to improve energy efficiencies, reduce greenhouse gas emissions and incorporate the use of materials that are less harmful to the environment; others are external, involving our suppliers and stakeholders, who we encourage (and whenever possible require) to embrace our values and environmentally-minded practices. Visit anvilcsr.com to read Anvil's Environmental and Social Responsibility Principles and to read the Executive Summary of our Environmental Report.

SOCIAL CERTIFICATIONS

Conducting business in a responsible way, in a way that respects and protects the rights of workers and provides quality of life for our employees, is something to which we're deeply committed. Our manufacturing plants are certified by Worldwide Responsible Accredited Production (WRAP), an independent, non-profit organization dedicated to the certification of lawful, humane and ethical manufacturing. We've also joined Social Accountability International (SAI) at the Corporate Signatory level, and are working with SAI, which promotes workers' rights primarily through its SA8000 system, to develop, implement and communicate a comprehensive strategy for improving social performance throughout our supply chain.

PRODUCT SAFETY & INTEGRITY

Anvil is committed to ensuring the highest standards for product safety. Our efforts extend to our product design, the materials that make up our products, our manufacturing practices, our testing and quality control procedures, and our overall ecological footprint. We stand behind our product claims so that you can be assured your Anvil products are safe for consumer use. It's not just the right thing to do. It's the smart thing. Conformity Certificates for CPSC compliance are available on our website. Tracking labels are now included in all youth apparel and TrackMyT.com is launching soon to enable consumers to track where their Anvil youth t-shirt was made and its environmental impact. We have adopted the AAFA Restricted Substance List and an Environmentally Preferable Purchasing Program. Our cotton comes from reputable organic suppliers and we require strict documentation to support our organic label and the requirements of the USDA's National Organic Program (NOP). We have the Oeko-Tex Standard 100 certification on certain styles.

ENVIRONMENTAL COMMITMENTS

At the heart of Anvil's mission is our commitment to helping make the earth a better place in which to live and work. We understand that manufacturing and business inherently have an impact on the planet, and it is our goal to minimize that impact. And we believe that any responsible business must be concerned about the preservation of the precious natural resources on which its own future—and all of ours, really—depends. We are committed to following the Ceres 10 point Corporate Code of Environmental Conduct and we have assessed our organizational GHG carbon footprint and analyzed the footprint of three of our key products: our basic tee, our organic tee and our recycled cotton tee. Based on all this data, we have developed several environmental goals which you can read about at anvilcsr.com.

